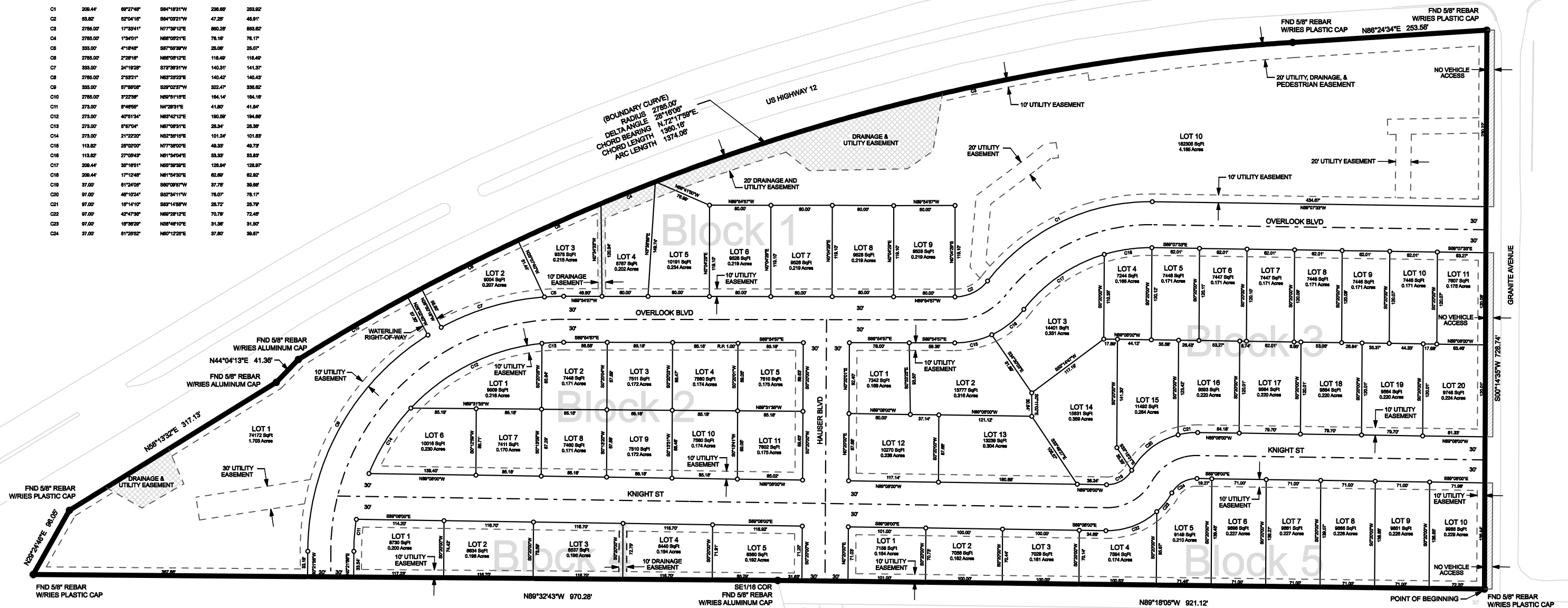


# OVERLOOK ESTATES SUBDIVISION PLAT

LOCATED IN N1/2SW1/4 OF SECTION 23, T. 10 N., R. 4 W., P.M.M.,  
LEWIS AND CLARK COUNTY, HELENA MONTANA

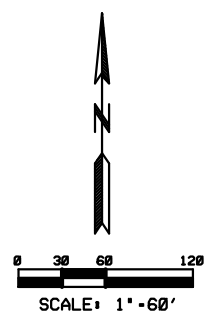
CURVE TABLE

CURVE	RADIUS	DELTA	BEARING	HORIZ DIST	ARC
C1	209.44'	89°27'49"	S84°18'31"W	236.69'	253.92'
C2	53.82'	52°04'18"	S84°32'21"W	47.25'	48.91'
C3	2785.00'	17°32'41"	N77°52'12"E	853.28'	853.62'
C4	2785.00'	1°34'01"	N89°05'21"E	78.16'	78.17'
C5	333.00'	4°18'48"	S87°58'39"W	25.09'	25.07'
C6	2785.00'	2°28'18"	N89°09'12"E	118.49'	118.49'
C7	333.00'	24°19'29"	S73°38'31"W	140.31'	141.37'
C8	2785.00'	2°53'21"	N83°25'23"E	140.42'	140.43'
C9	333.00'	57°09'09"	S29°02'37"W	322.47'	338.62'
C10	2785.00'	3°22'38"	N89°51'15"E	164.14'	164.16'
C11	273.00'	8°48'58"	N4°28'31"E	41.80'	41.84'
C12	273.00'	40°51'34"	N83°42'12"E	193.58'	194.88'
C13	273.00'	8°57'04"	N87°08'15"E	28.34'	28.36'
C14	273.00'	21°22'07"	N32°38'15"E	101.24'	101.83'
C15	113.62'	28°02'00"	N77°38'00"E	49.33'	49.73'
C16	113.62'	27°08'43"	N81°34'04"E	53.33'	53.83'
C17	209.44'	35°18'51"	N59°30'39"E	128.84'	128.97'
C18	209.44'	17°12'48"	N81°54'50"E	62.89'	62.82'
C19	37.00'	81°24'09"	S80°09'57"W	37.78'	38.88'
C20	97.00'	48°10'24"	S82°34'11"W	78.07'	78.17'
C21	97.00'	15°14'10"	S83°14'58"W	25.72'	25.79'
C22	97.00'	42°47'38"	N89°28'12"E	70.78'	72.49'
C23	97.00'	18°38'29"	N88°48'10"E	31.36'	31.50'
C24	37.00'	81°29'52"	N80°12'25"E	37.89'	38.57'



**LEGEND**  
 ○ SET 5/8" REBAR WITH ALUMINUM CAP (NASH 52185)  
 ● FOUND AS NOTED  
 - - - UTILITY EASEMENT, UNLESS SHOWN OTHERWISE

**SURVEYOR'S NOTE**  
 ALL UTILITY EASEMENTS HAVE A WIDTH OF 10', UNLESS SHOWN OTHERWISE.



SHEET 2 OF 2

CERTIFICATE OF SURVEYOR Located in N1/2SW1/4 SECTION 23, T. 10 N., R. 4 W., P.M.M LEWIS AND CLARK COUNTY	1/4	SEC.	TWP.	RGE.
		23	10 N	4 W
OVERLOOK HOMES, LLC				
OVERLOOK ESTATES SUBDIVISION				
REVISIONS DATE BY	 WVC ENGINEERING 1275 MAPLE STREET, SUITE F HELENA, MT 59601 (406) 443-9882			
G. STEWART NASH, PLS	Date			